

---

# WATER COOLED

## Catalog Supplement

---



High Efficiency

## 130 Ton Screw Module

MS130R1\_\_W

-Append to Multistack Catalog "Water Cooled Screw Product Data Catalog"



The Leader in Modular Chillers

# Performance Table

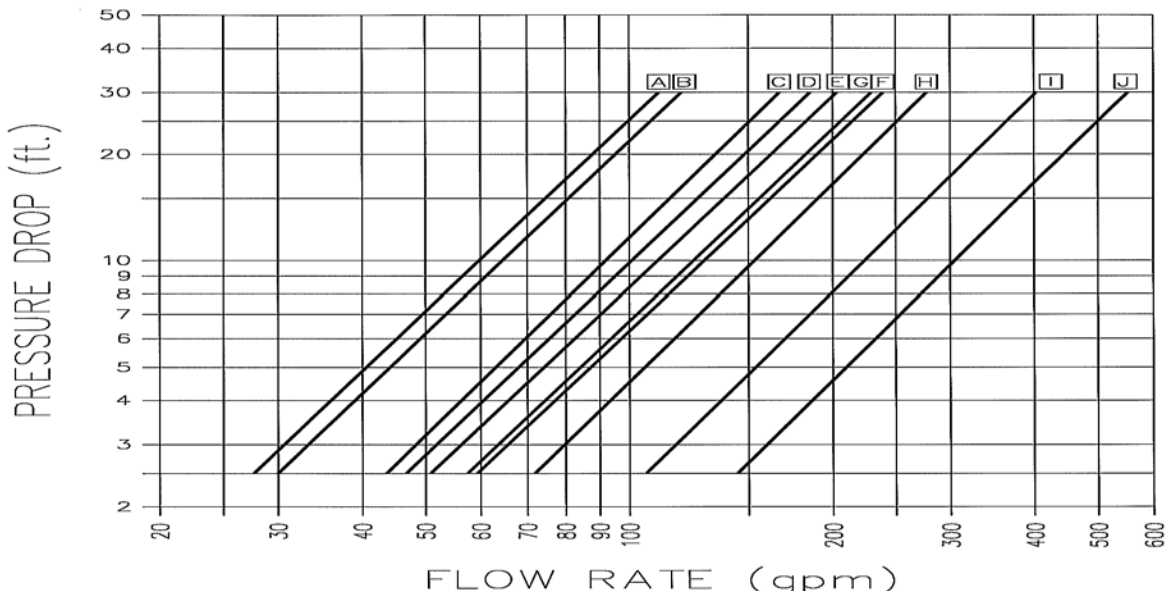
Single Module MS130R1_W				Entering Condenser Water Temperature											
Leaving Chilled Water °F	75°F			80°F			85°F			90°F			95°F		
	Tons	KW	EER	Tons	KW	EER	Tons	KW	EER	Tons	KW	EER	Tons	KW	EER
40	130.3	93.5	16.7	127.0	98.5	15.5	123.6	104.0	14.3	119.8	109.9	13.1	115.9	116.2	12.0
42	135.3	94.2	17.2	132.0	99.2	16.0	128.5	104.7	14.7	124.7	110.6	13.5	120.7	116.9	12.4
44	140.6	95.0	17.8	137.2	99.9	16.5	133.6	105.3	15.2	129.7	111.2	14.0	125.5	117.5	12.8
45	143.3	95.3	18.0	139.8	100.2	16.7	136.2	105.6	15.5	132.3	111.6	14.2	128.0	117.9	13.0
46	146.0	95.7	18.3	142.5	100.6	17.0	138.8	106.0	15.7	134.8	111.9	14.5	130.6	118.2	13.3
48	151.6	96.5	18.8	147.9	101.3	17.5	144.1	106.7	16.2	140.1	112.6	14.9	135.7	118.9	13.7
50	157.3	97.3	19.4	153.6	102.1	18.1	149.6	107.4	16.7	145.1	113.2	15.4	141.0	119.6	14.2

All performance data is based on a 10°F chilled water temperature drop through the evaporator and condenser. For total chiller performance multiply above output (Tons) and input (kW) by the number of modules. For selection procedures, see selection example on page 5 of “Water Cooled Screw Product Data Catalog.”

# Water Pressure Drop

Evaporator and condenser water pressure drops are provided in Figure 1 below, using lines I and J for the MS130. To use Figure 1, divide the total chilled water GPM by the number of modules in the chiller.

Figure 1



- |                         |                          |
|-------------------------|--------------------------|
| A - MS20C4_W CONDENSER  | D - MS50B4_W EVAPORATOR  |
| A - MS30C4_W CONDENSER  | E - MS50Z6_W EVAPORATOR  |
| B - MS20C4_W EVAPORATOR | F - MS50Z6_W CONDENSER   |
| B - MS30C4_W EVAPORATOR | G - MS70Z6_W EVAPORATOR  |
| C - MS30C5_W CONDENSER  | H - MS70Z6_W CONDENSER   |
| C - MS30C5_W EVAPORATOR | I - MS130R1_W EVAPORATOR |
| C - MS50B4_W CONDENSER  | J - MS130R1_W CONDENSER  |

# System Wire & Fuse Sizing Specifications

- Compressor Rated Load Amps (RLA) and Locked Rotor Amps (LRA)

Volts/Hz/PH	Compressor	
	RLA	LRA
208/60/3	N/A	N/A
230/60/3	N/A	N/A
460/60/3	165	788
575/60/3	132	635

Note: For wire sizing and fuse sizing see page 7 of "Water Cooled Screw Product Data Catalog"

# General Data Table

Model	MS130R1_W
<b>Compressor Type</b>	Screw
Dry Weight (lbs. each)	1,788
Normal Capacity (each)	130
Quantity	1
Oil Charge (pints)	46.5
<b>Evaporator</b>	Brazed Plate
Weight (lbs. each)	636
Water Storage (gal. each)	16.6
Circuit Configuration	Dual
Quantity	1
Header System (gallons)	24.2
<b>Condenser</b>	Brazed Plate
Weight (lbs. each)	679
Water Storage (gal. each)	18.3
Circuit Configuration	Dual
Quantity	1
Header System (gallons)	24.2
<b>Refrigerant Type</b>	R22
Charge (lbs./circuit)	80
Number of Circuits	1
<b>Operating Weight (lbs.)</b>	5,300
<b>Shipping Weight (lbs.)</b>	4,600

Note: Other refrigerants are available per request.

DATE	REVISION
11-2-81	REVISION B C/D
1-4-83	REVISED HEARTH LOCATION
10-23-88	REVISED TEXT
11-30-88	HEARTH WAS R3
11-30-88	PRUSS
01-05-07	ADDED NEW DRGS
01-05-07	HASIN

**MULTISTACK**  
 Sports, Wisconsin 54869  
 ALL DIMENSIONS IN INCHES / DO NOT SCALE DRAWINGS  
 FIRST USED ON  
 PART NO.

**C 1000-2421 E**  
**SUBMITTAL: STANDARD WATER COOLED**  
**MS130R1...W**

DRAWN BY: SUJGS CHECKED BY: DATE: 2-20-02  
 SCALE: NONE

CUSTOMER:

JOB:

SALES ORDER NO.:

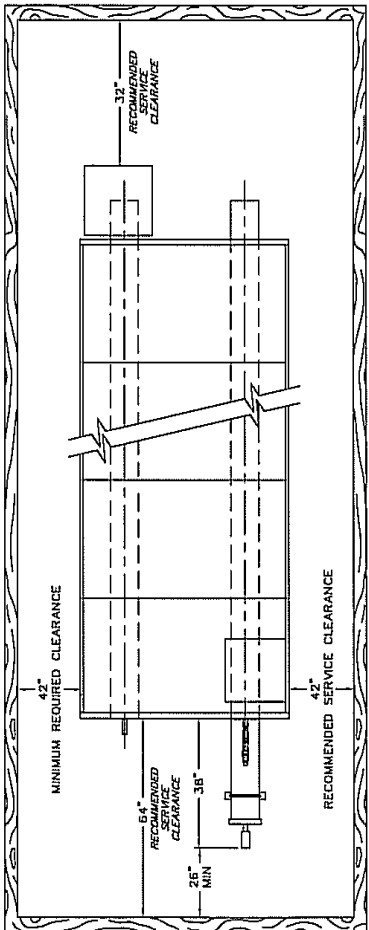
SALES REP.:

CONTRACTOR:

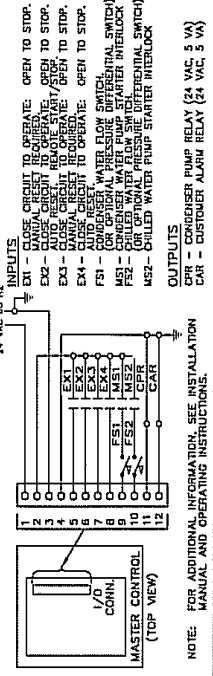
ENGINEER:

NOTES:

PLAN VIEW

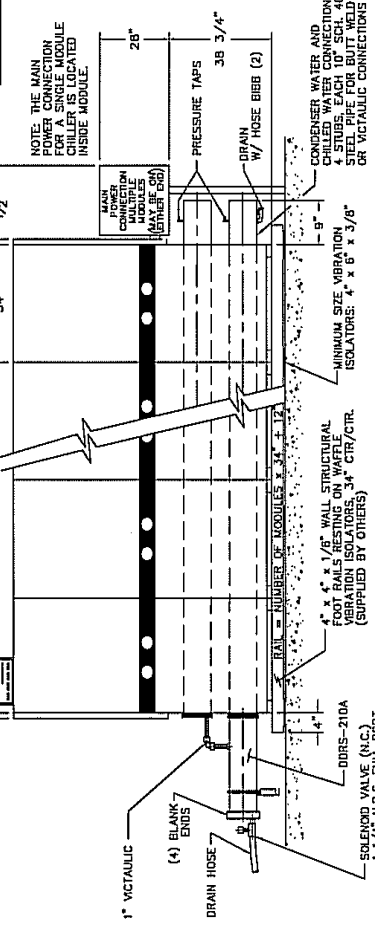


COMPUTER POWER & EXTERNAL I/O CONNECTIONS



NOTE: FOR ADDITIONAL INFORMATION, SEE INSTALLATION MANUAL AND OPERATING INSTRUCTIONS.

MODEL TYPE	APPROX. WEIGHT (LBS)
MS 130R1	4500



FRONT ELEVATION

END ELEVATION

**C 1000-2421**