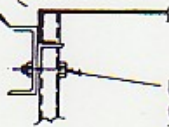


NOTE:
SPREADER BARS
REQUIRED.

UNIT WEIGHT 1,450 LBS.

LIFTING CHANNELS ARE
AVAILABLE. CONTACT
FACTORY.



USE 3/8-16 X 2-1/2 LG (4) REQ'D.
GRADE 5 BOLTS.
TO ATTACH CHANNELS TO
FRAME ASSEMBLY.

FIGURE 1