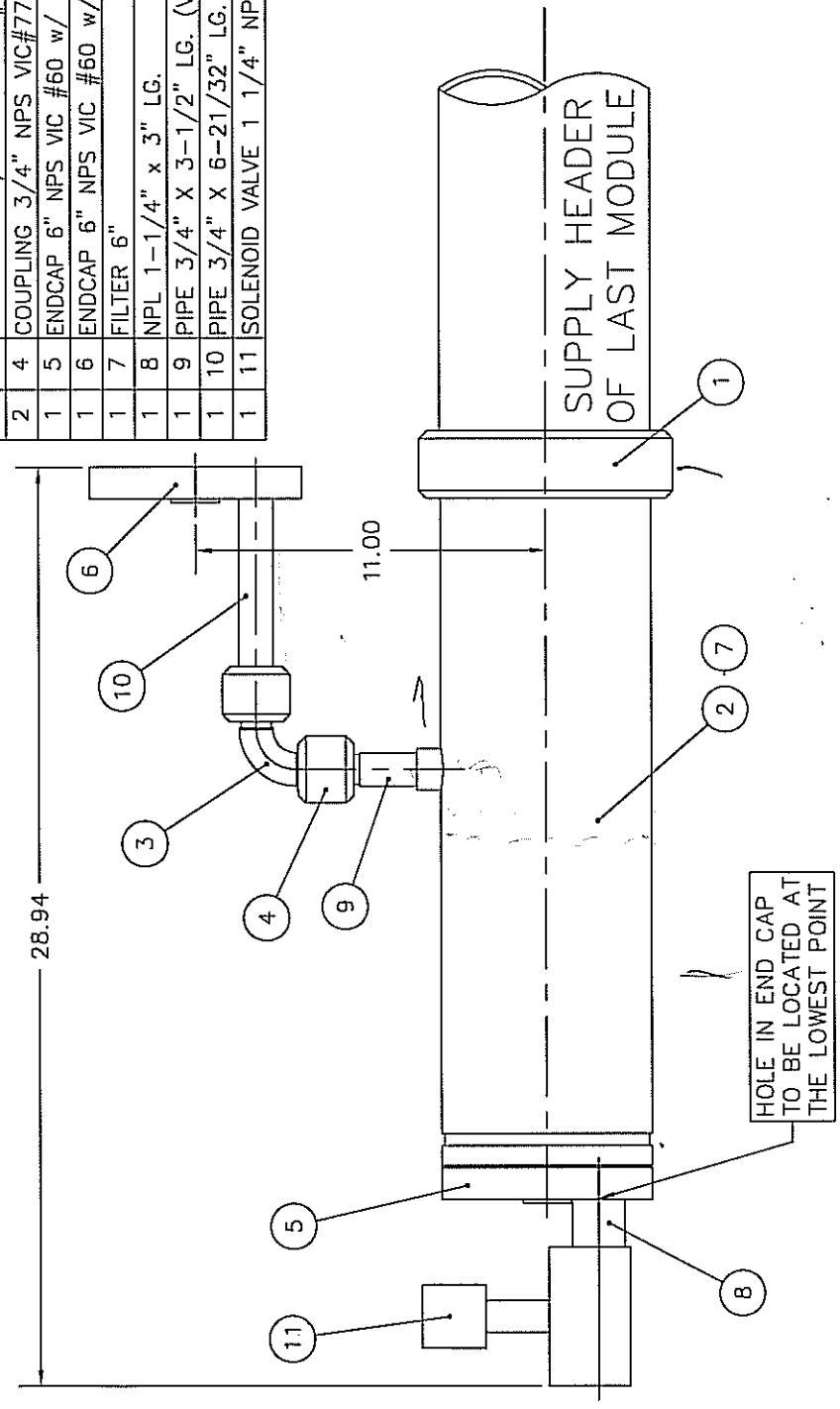


A	B	C	D	E	F	G	H	I	J	K	L
<b>III MULTISTACK</b>											
B 1000-1035 L											
Spartia, Wisconsin 54656 ALL DIMENSIONS IN INCHES / DO NOT SCALE DRAWINGS FIRST USED ON ASSY NO: STD ENGR SPEC.											
SIMILAR TO: B1000-1035											
DRAWN BY: MWK DATE: 1/7/98 CHECKED BY: ENGR: DATE:											
SCALE: NONE											

QTY	ITEM	NAME	DWG	MS PART NO
3	1	COUPLING "6 VIC# 75 NPS		COUPLIN26
1	2	SPOOL PIPE 6"		PIPE22A
1	3	90° ELBOW 3/4" S.R. VIC #10		ELBOW119
2	4	COUPLING 3/4" NPS VIC#77		COUPLIN45
1	5	ENDCAP 6" NPS VIC #60 w/ 1 1/4" NPT HOLE	1000-1088-01	BLANK21B
1	6	ENDCAP 6" NPS VIC #60 w/ 3/4" NPT HOLE	1000-1087-01	BLANK21A
1	7	FILTER 6"		
1	8	NPL 1-1/4" x 3" LG.		NIPPLE29
1	9	PIPE 3/4" X 3-1/2" LG. (VIC X THD)		PIPE80
1	10	PIPE 3/4" X 6-21/32" LG. (VIC X THD)		PIPE81
1	11	SOLENOID VALVE 1 1/4" NPT		VALVE54



1000-1035