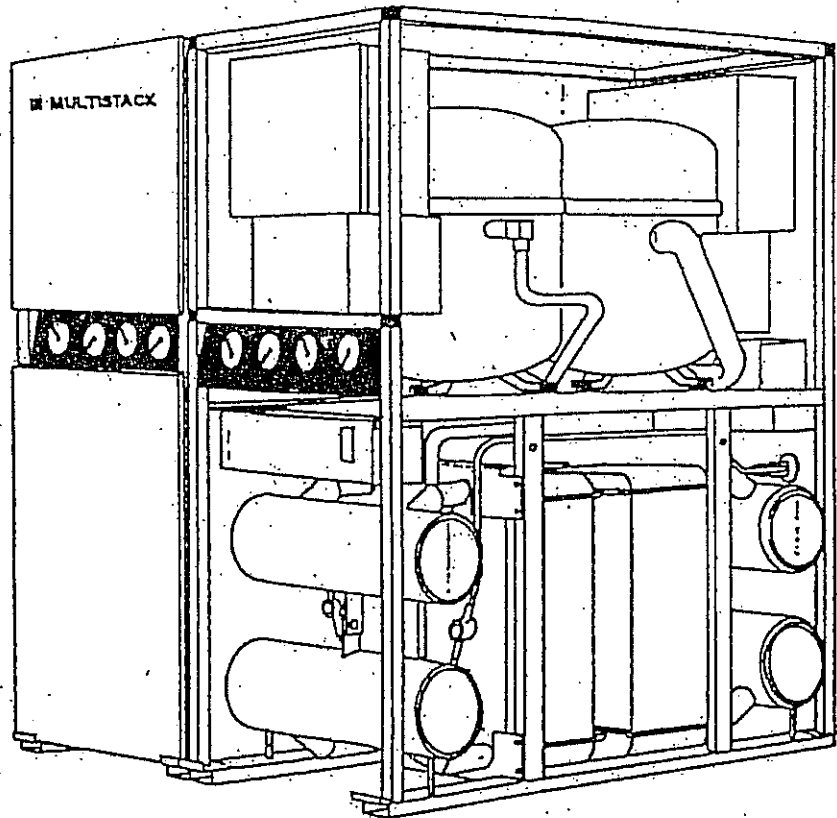


# MULTISTACK



SERVICE WITH A SMILE



## PARTS BOOK

AIR COOLED

**MULTISTACK INC.**

P.O. Box 854

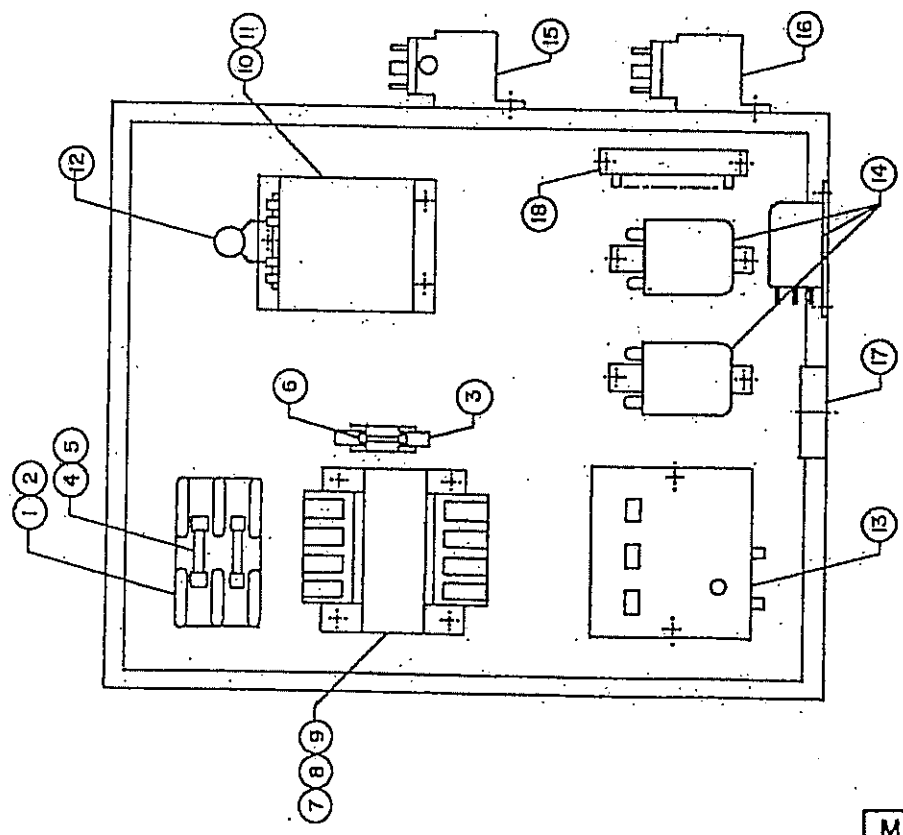
365 South Oak Street

West Salem, WI 54669

Phone: (608) 786-3400

Fax: (608) 786-3450

EXT	MODULE VOLTAGE
41	208 VOLT
42	230 VOLT
43	460 VOLT
44	575 VOLT



RECOMMENDED QTY TO STOCK				ITEM	PART DESCRIPTION	MS PART NO
EXT 44	EXT 43	EXT 42	EXT 41			
1-4	1-4	1-4	1-4	1	FUSE BLOCK	BLOCK 27
-	-	-	-	2	FUSE BLOCK	BLOCK24
-	-	-	-	3	FUSE BLOCK	BLOCK31
-	-	5	5	4	FUSE (3 AMP)	FUSE 26
5	5	-	-	5	FUSE (1 AMP)	FUSE25
5	5	5	5	6	FUSE (5 AMP)	FUSE 32
-	-	-	1	7	TRANSFORMER (208 V)	TRANSFO27
1	1	1	-	8	TRANSFORMER (230/460V)	TRANSFO28
-	-	-	-	9	TRANSFORMER (575 V)	TRANSFO25
1	1	1	1	10	CONTACTOR (60 AMP)	CONTACT 25
-	-	-	-	11	CONTACTOR (40 AMP)	CONTACT 23
-	-	-	-	12	SUPPRESSOR	SUPPRESS21
1	1	1	1	13	OVERLOAD, MOTOR	RELAY25
1	1	1	1	14	RELAY	RELAY 23
1	1	1	1	15	SWITCH HI-PRESSURE	SWITCH 24
1	1	1	1	16	SWITCH LO-PRESSURE	SWITCH25
1	1	1	1	17	TIMER	TIMER 21
-	-	-	-	18	TERMINAL BLOCK	BLOCK30

REV. 8-12-96

MS30S-AC & MS30SX-AC  
 COMPR CONTROL PANEL  
 C100C 958

REV. 8-12-96

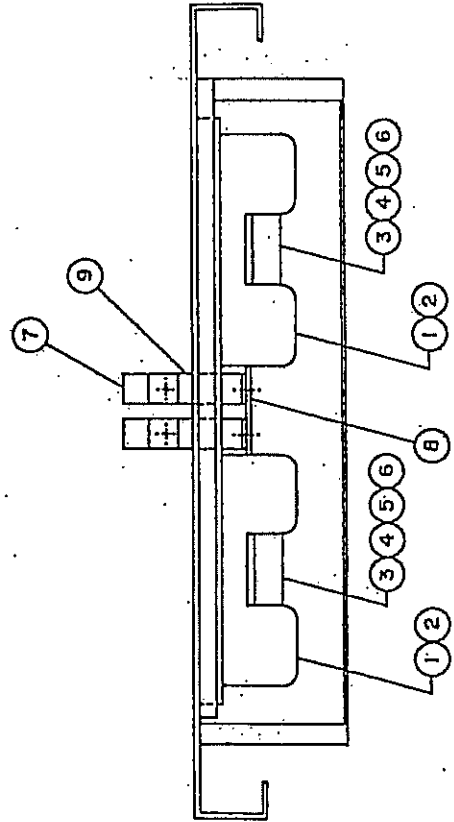
MS30S-AC & MS30SX-AC  
 COMPR CONTROL PANEL





EXT	MODULE VOLTAGE
41	208/230 VOLT
42	460/575 VOLT

QTY TO STOCK			ITEM	PART DESCRIPT	MS PART NO.
EXT 42	EXT 41	MODULES			
		1-4 5-10 1-4 5-10			
		-	1	FUSE BLOCK 3-POLE 250V	BLOCK28
		-	2	FUSE BLOCK 3-POLE 600V	BLOCK25
		3 6	3	FUSE 30 TON 70 AMP	FUSE27
		3 6	4	FUSE 50 TON 100 AMP	FUSE28
		3 6	5	FUSE 30 TON 35 AMP	FUSE29
		3 6	6	FUSE 50 TON 50 AMP	FUSE31
		-	7	CLAMP	CLAMP22
		-	8	BUS-BAR	STRAP20
		-	9	ANGLE BUS-BAR	ANGLE23

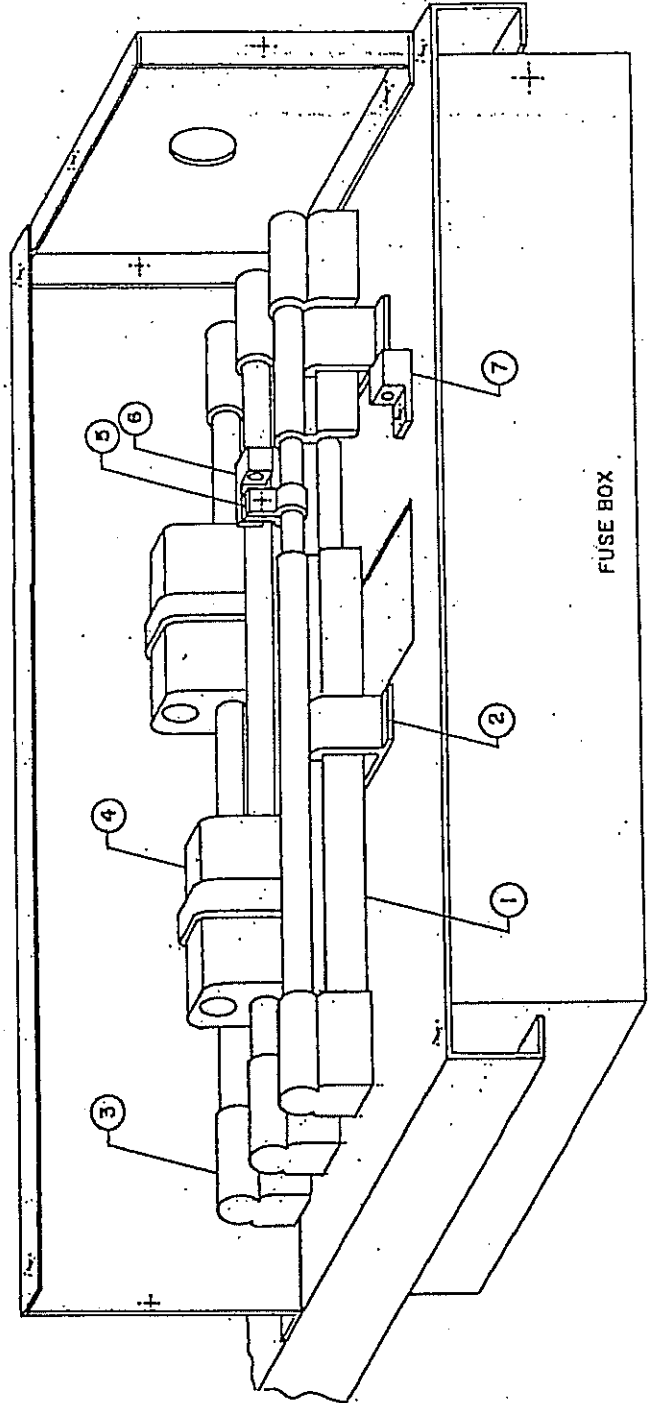


LOCATED AT  
EVAPORATOR END

MS30S, MS30SX & MS50C  
FUSE BOX ASSY

MS30S, MS30SX & MS50B  
FUSE BOX ASSY

RECM'D QTY TO STOCK	ITEM	PART DESCRIPTION	S PART NO.
-	1	BUS-BAR 18.00"	BUSBAR20
-	2	HANGER CLAMP	BUSBAR21
-	3	END CAP	ENDCAP20
-	4	POWER FEED COVER & CLIP	CONNECT26
-	5	CLAMP BUS-BAR	CLAMP22
-	6	TERMINAL #2-14 WIRE 1/4 SCR	TERMINA49
-	7	GROUND LUG	TERMINA48



SINGLE MODULE  
ELECTRIC POWER CONN.  
C100C 0971

SINGLE MODULE  
ELECTRIC POWER CONN.  
C1000-0971