

MULTISTACK[®]

Originators. Innovators. Never the Imitators.sm



Air Cooled MagLev Flooded Chiller

**For Chillers:
ASP075FC, ASP100FC**



Air Cooled MagLev™ Flooded Chiller

Product Introduction

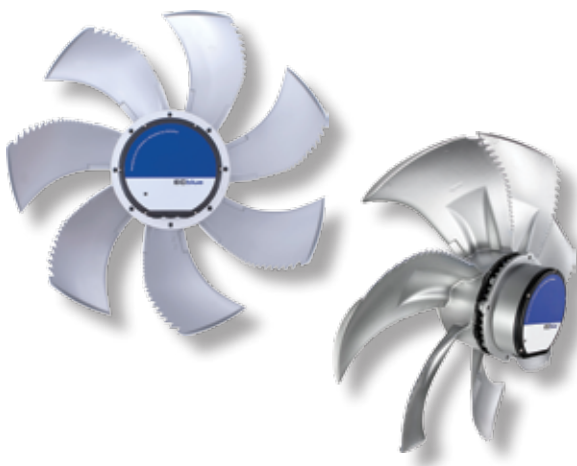


Cutting Edge Performance

- Near water-cooled efficiencies at air-cooled conditions with unprecedented part-load performance
- MagLev technology offers a near-frictionless two-stage variable speed centrifugal compressor for maximum efficiency at all load conditions
- Oil free design eliminates performance degradation and ensures sustainable, documentable performance over the life of the chiller as well as reduced maintenance
- Flooded 4-pass evaporator provides low-flow turndown at extreme efficiency levels

FlexSys Lite Controls

- Real time chiller optimization with Natural Progression Controls™
- Robust industrial grade computing hardware
- Onboard memory allows trending of over 200 points in 5 second intervals for up to 10 years of data logging
- Standard chilled-water pump control

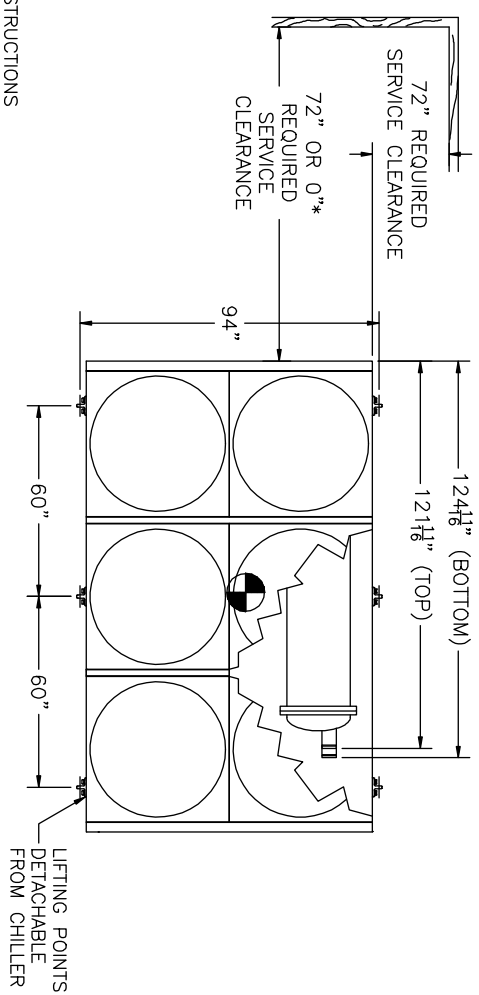


Super Quiet Operation

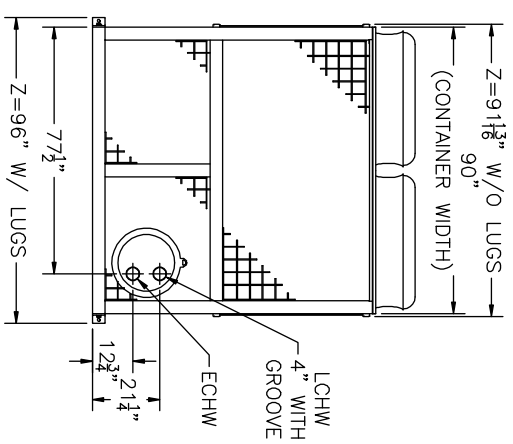
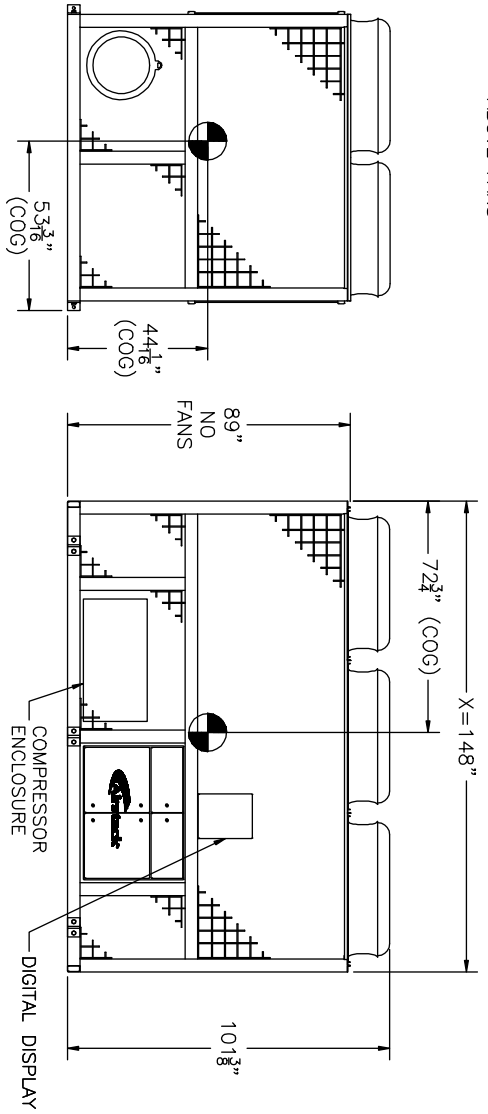
- Total sound signature of 69 dB(A) at 30 feet (ASP100F)
- MagLev compressor itself is virtually silent
- State-of-the-art ECM fans deliver quiet and ultra-efficient operation . . . the perfect complement to the MagLev compressor

Air Cooled MagLev™ Flooded Chiller

CHILLER OPTION: ASP075F



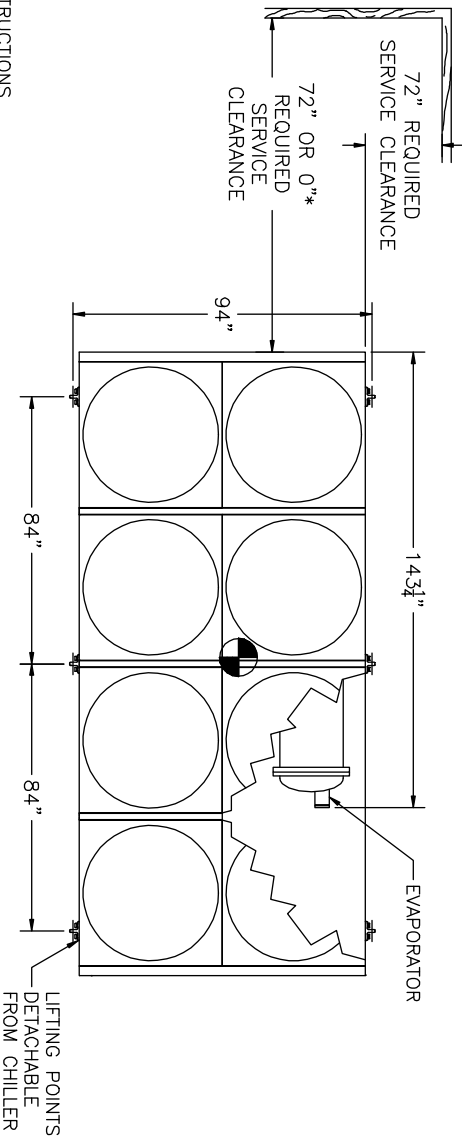
APPROXIMATE WEIGHTS	
SHIPPING	6410 LBS
OPERATING	6565 LBS



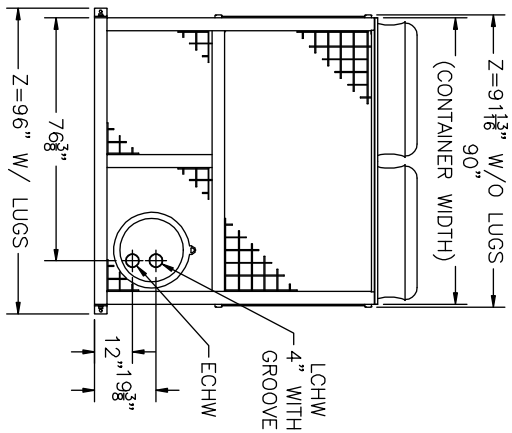
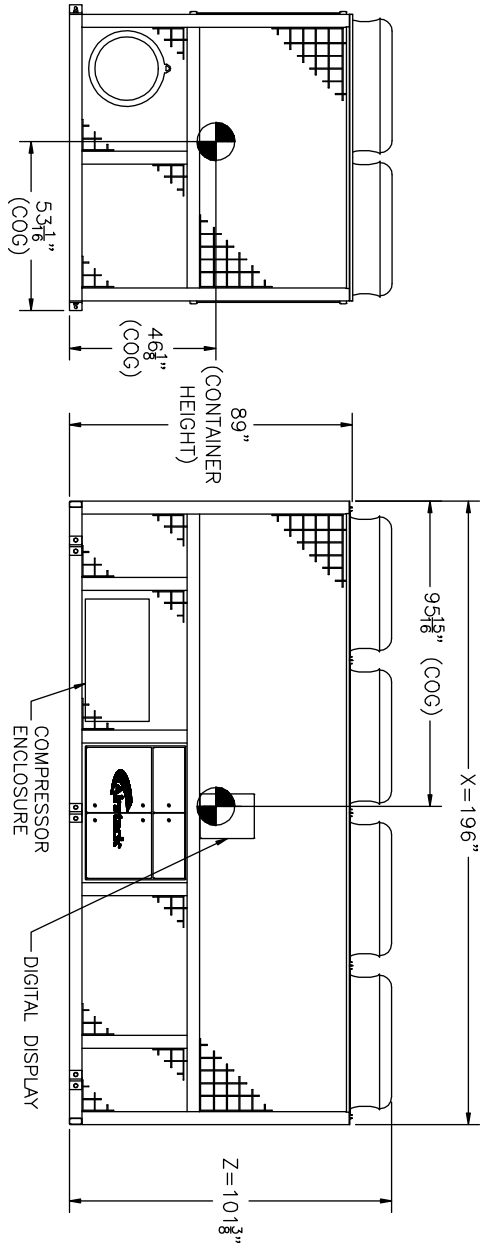
*DO NOT LOCATE MORE THAN 1 CHILLER NEXT TO THIS CHILLER. SERVICE CLEARANCE IS REQUIRED FOR TUBE ACCESS.

Air Cooled MagLev™ Flooded Chiller

CHILLER OPTION: ASP100F



APPROXIMATE WEIGHTS	
SHIPPING	7830 LBS
OPERATING	8035 LBS



Air Cooled MagLev™ Flooded Chiller

PERFORMANCE CHARTS

ASP075F Air Cooled Flooded Chiller Points for AHRI 550/990

Ambient Air Temperature 95 °F

(A suitable antifreeze solution is required for operation below 40°F Ambient)

Load %	100%					75%					50%					25%				
Leaving Chilled Water 44°F	Tons	kW	kW/Ton	EER	COP	Tons	kW	kW/Ton	EER	COP	Tons	kW	kW/Ton	EER	COP	Tons	kW	kW/Ton	EER	COP
	75	48.3	0.997	12.04	3.852	56.3	44.5	0.791	15.17	4.44	37.5	24.6	0.656	18.29	5.36	18.8	11.1	0.595	20.17	5.91
IPLV = 0.700																				

ASP100F Air Cooled Flooded Chiller Points for AHRI 550/990

Ambient Air Temperature 95 °F

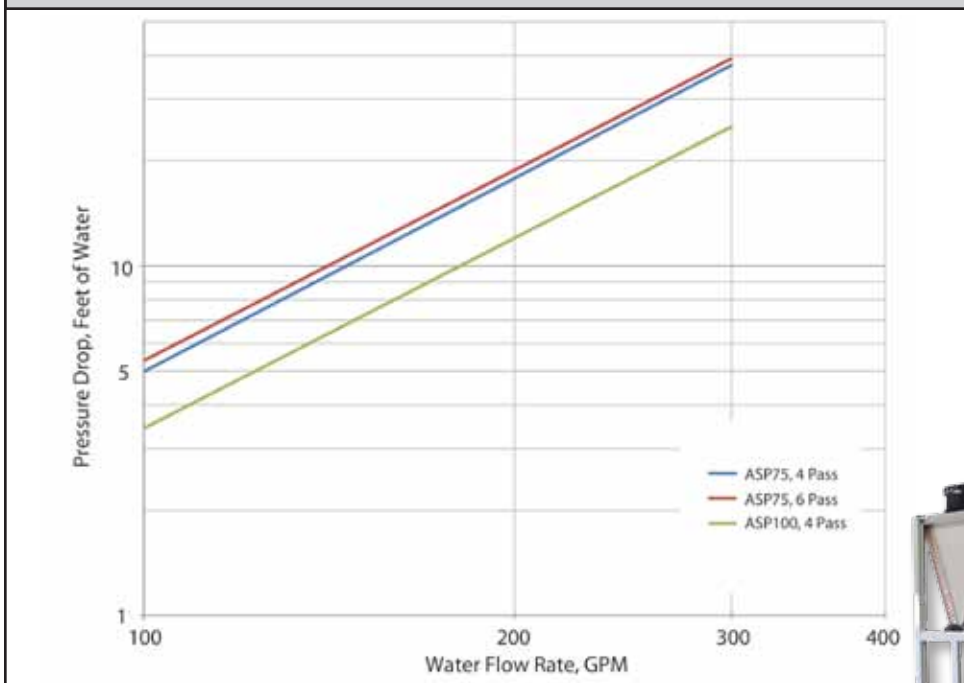
(A suitable antifreeze solution is required for operation below 40°F Ambient)

Load %	100%					75%					50%					25%				
Leaving Chilled Water 44°F	Tons	kW	kW/Ton	EER	COP	Tons	kW	kW/Ton	EER	COP	Tons	kW	kW/Ton	EER	COP	Tons	kW	kW/Ton	EER	COP
	100	99.2	0.992	12.10	3.54	75	56.7	0.757	15.85	4.64	50	31.4	0.628	19.10	5.60	25	14.9	0.597	20.10	5.90
IPLV = 0.674																				

Electrical Data 460-60-3

	MCA	MOP	Comp RLA	Fan RLA
ASP075F	151	250	103	3.6 (6 fans)
ASP100F	199	300	136	3.6 (8 fans)

Pressure Drop Chart



Originators...

Multistack invented the modular water chiller. It started with a radically simple idea: chiller modules that could be brought into the equipment room one at a time, through standard doorways and down elevators, to form a fully integrated chiller system. The idea launched a revolution and transformed Multistack into a leader in the commercial water-chiller industry.

Innovators...

Multistack perfected the modular chiller and leads the industry in innovative and environmentally friendly modular solutions. Since founding in the late 1980s, Multistack has engineered, manufactured, and distributed an impressive array of modular air conditioning firsts: the first on-board strainer, the first modular automatic blow-down device, the first modular chiller for variable flow, the first modular chiller-heater (heat pump), the first modular heat-recovery chiller, the first modular air-to-water heat pump, the first modular chiller to utilize MagLev™ compressor technology, and the first modular chiller to utilize R-134a.

Never the Imitators...

Multistack sets the standard in the industry for superior customer service, fast and on time shipment, superior product quality, and new product development. Our pioneering leadership in environmental issues is well documented. If you want the best, be sure to specify the original – Multistack®.



|||[®] MULTISTACK[®]

1065 Maple Avenue P.O. Box 510 Sparta, WI 54656

Phone 608-366-2400 • Fax 608-366-2450

www.multistack.com



F1671011